



Tech Sheet



Cyberoam iView

Cyberoam iView is an intelligent logging and reporting appliance that offers visibility into activity within the network by aggregating information from multiple devices that may be spread across multiple geographical locations, in near real-time. It offers multiple reports on iView's single dashboard, giving organizations an uninterrupted view of multiple network parameters like user, host, source, destination, protocol and more. Aggregated reporting gives them an organization-wide security picture, enabling them to apply or correct security policies from the central location.

The appliance-based approach provides simplicity in deployment and security that is difficult to achieve in a software solution. Its on-appliance storage offers data redundancy and faster data retrieval, supporting compliance requirements.

Organizations receive detailed drill-down reports through iView with a clear view of users and their activities over any device and location. Identity-based attack reports like top attacks, top applications used by attackers, top spam recipients, top viruses and more allow them to locate the weak link in the system, allowing quick problem identification and resolution while meeting the requirements of regulatory compliance. Host, application and firewall rule-based usage reports give identity-based information like top users consuming maximum bandwidth for uploads and downloads, top applications used, top accept and deny rules, allowing organizations to manage their resources and plan for their future needs in addition to enhance security levels.

Cyberoam iView supports proprietary devices as well as emerging network and security technologies, eliminating the need for separate logging and reporting solutions for different products within the system.

Features & Benefits

Centralized Log Management

Analyzing logs is complex and time-consuming as multiple devices lead to management of various systems and proprietary technologies that deliver logs in different formats. iView allows effortless, identity-based log management in near real-time. Organizations can match user identity-based information contained in logs with their rights to reveal discrepancies in user activities.

Security Management

Use of multiple network devices, applications and protocols in organizations has increased the complexity of threats exponentially. A quick glance at the iView dashboard, its drill-down reports and identity-based logging and reporting enables organizations to instantly locate network attacks, their source and destination, allowing rapid action.

Storage Management

By utilizing the RAID technology, iView addresses the performance limitations of the conventional disk storage and delivers increased data protection against data loss due to the hard disk failure, high performance and increased storage capacity.

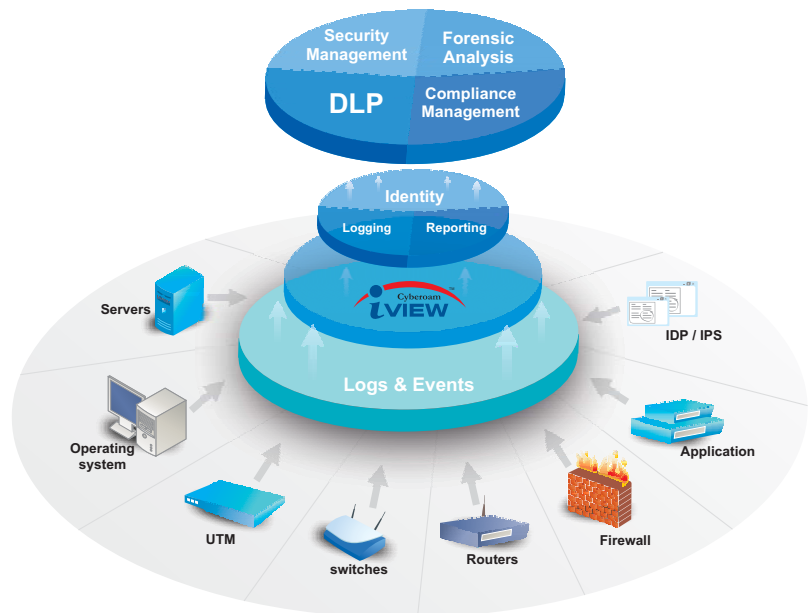
iView enables rapid event investigation and easy access to all audit and events data by storing raw logs and related records on the same appliance in a secure database. The database design aids both efficient storage and fast retrieval of the collected data. And, with the on-appliance terabyte storage space, iView appliances enable long-term, fully-accessible data retention.

Compliance Management

Regulatory compliance demands overwhelming effort, time and cost to retrieve and store logs and reports from various devices. iView eliminates compliance complexities with one-step access to critical information with multiple summary reports on a single dashboard that can be drilled down up to the third-level for granular information. Organizations can easily monitor access and security violations in the network, accelerating incident response and facilitating compliance.

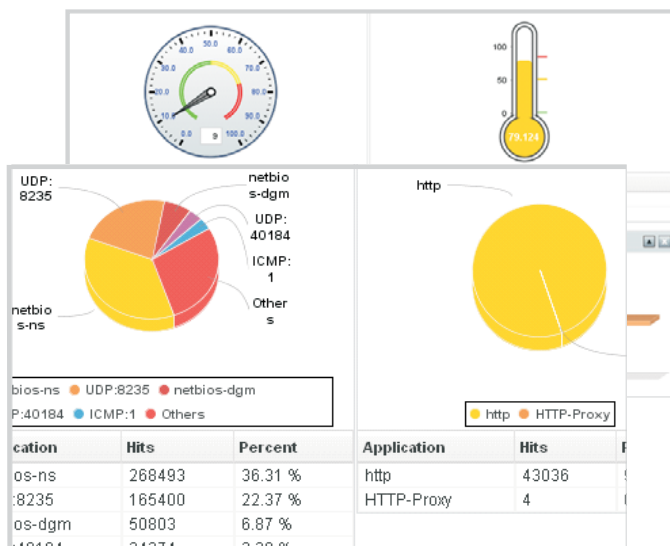
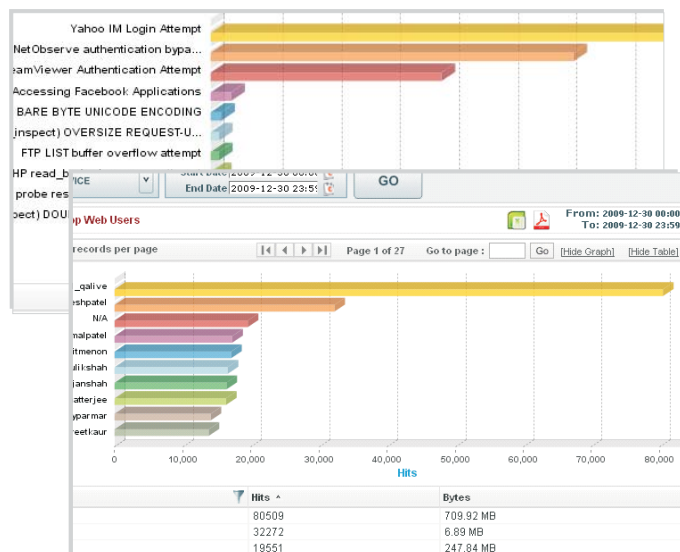
Forensic Analysis

Security breaches result in huge legal costs and loss of reputation that can drive organizations to bankruptcy. iView helps organizations reconstruct the sequence of events that occurred at the time of security breach through iView logs and reports. It helps reducing the cost of investigation and analysis and minimize network downtime while gathering historical information.



Cyberoam iView Work Flow

Sample Reports



Feature Specifications

Logs

- Real-time log
- Archive log
- Audit Log
- Archived Log search
- Log storage (Backup/ restore)
- Exportable format - MS Excel
- Compliance support

- Attempts, Blocked Web Attempts
- Multi-format reports - tabular, graphical
- Exportable formats - PDF, Excel
- Email Alerts/automated Report Scheduling
- Real-time reports

Operating Environment

- Hardened Linux OS

Reports

- 1000+ drilldown reports
- Historical reports
- Search Reports
- Customized Report Views
- Reports Include: Security, Spam, Virus, Traffic, Blocked

Administration

- Web based Management Console
- Role-based administration
- Multiple Dashboard - Report, Resource, Custom
- Automatic Device Detection
- Device Grouping
 - geographical location
 - device type
 - device models
 - administrators
- Reports accessible from any location using standard Web browser

Supported Web Browsers

- Microsoft Internet Explorer 6.0+
- Mozilla Firefox 2.0+ (Best view)
- Google Chrome

Supported Network and Security Devices

- Custom/Proprietary devices including UTM's
- Proxy Firewalls
- Custom Applications
- Syslog-compatible devices

Hardware Specifications

CR-iVU25

CR-iVU100

CR-iVU200

Storage

Total Available Storage	500GB	3.5TB	7TB
Number of Hard Drives	2 (500GB each)	8 (500GB each)	8 (1TB each)
RAID storage Management	RAID 1	RAID 5	RAID 5

Performance

Events per Second (EPS)	250	500	1000
Devices supported	25	100	200

Interfaces

Ethernet Ports	4GbE	4GbE	4GbE
Memory	2GB	4GB	4GB
Console Ports	1 (RJ45)	1 (DB9)	1 (DB9)
USB Ports	1	Dual	Dual
DVD-RW	No	Yes	Yes
VGA	No	Yes	Yes

Dimensions

H x W x D (inches)	1.72 x 10.83 x 17.32	3.46 x 16.7 x 20.9	3.46 x 16.7 x 20.9
H x W x D (cms)	4.4 x 27.5 x 44	8.8 x 42.4 x 53.1	8.8 x 42.4 x 53.1
Weight	3.78kg, 8.35lbs	16 kg, 36lbs	16 kg, 36lbs

Power

Input Voltage	100-240 VAC	100-240 VAC	100-240 VAC
Consumption	65W	265W	265W
Total Heat Dissipation (BTU)	175	425	425

Environmental

Operating Temperature	5 to 40 °C	5 to 40 °C	5 to 40 °C
Storage Temperature	20 to 70 °C	20 to 70 °C	20 to 70 °C
Relative Humidity (Non condensing)	20 to 70%	20 to 70%	20 to 70%

Toll Free Numbers

USA : +1-877-777-0368 | India : 1-800-301-00013

APAC/MEA : +1-877-777-0368 | Europe : +44-808-120-3958

Copyright © 1999-2010 Elitecore Technologies. All Rights Reserved. Cyberoam & Cyberoam logo are registered trademarks of Elitecore Technologies. ®/TM: Registered trade marks of Elitecore Technologies or of the owners of the Respective Products/Technologies.

Although Elitecore attempted to provide accurate information, Elitecore assumes no responsibility for accuracy or completeness of information neither is this a legally binding representation. Elitecore has the right to change, modify, transfer or otherwise revise the publication without notice.

